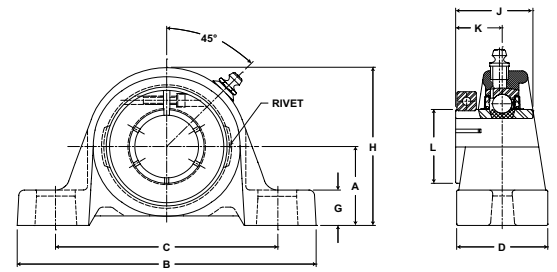


Browning[®] Mounted Ball Bearings



Duty: Standard
Rolling Elements: Ball
Housing: Cast Iron Pillow Block
Self Alignment: +/- 1.5 Degrees
Lock: BOA Concentric
Seal: Contact and Flinger
Temperature: -20° to 200°F



VPB 200 Series Standard Duty Pillow Blocks - BOA Concentric Locking

Bore Diameter inch	Part No.	Bearing Insert No.	Basic Dynamic Rating lb/N	Dimensions inch / mm										Bolt Size	Unit Wt. lb/kg
				A	B	C		D	G	H	J	K	L		
						min.	max.								
3/4	VPB-212	VB-212	2611 11614	1 5/16 33.3	5 127.0	3 3/8 85.7	4 3/16 106.4	1 11/32 34.1	17/32 13.5	2 17/32 64.3	1 9/32 32.5	25/32 19.8	1 3/4 44.5	3/8	1.6 .73
7/8	VPB-214	VB-214	2801	1 7/16	5 1/2	3 11/16	4 9/16	1 13/32	19/32	2 13/16	1 7/16	7/8	1 15/16	3/8	1.9 .86
15/16	VPB-215	VB-215	12459	36.5	139.7	93.7	115.9	35.7	15.1	71.4	36.5	22.2	49.2		
1	VPB-216	VB-216													
1 1/8	VPB-218	VB-218	4381	1 11/16	6 3/16	4 3/16	5 1/16	1 3/4	21/32	3 9/32	1 9/16	15/16	2 3/16	1/2	2.9 1.32
1 3/16	VPB-219	VB-219	19487	42.9	157.2	106.4	128.6	44.5	16.7	83.3	39.7	23.8	55.6		
1 1/4	VPB-220S	VB-220S													
1 1/4	VPB-220	VB-220	5782 25718	1 7/8 47.6	6 3/4 171.5	4 5/8 117.5	5 3/8 136.5	1 3/4 44.5	23/32 18.3	3 11/16 93.7	1 3/4 44.5	1 1/16 27.0	2 7/16 61.9	1/2	3.8 1.72
1 3/8	VPB-222	VB-222	5782	1 7/8	6 3/4	4 5/8	5 3/8	1 3/4	23/32	3 11/16	1 3/4	1 1/16	2 9/16	1/2	3.8 1.72
1 7/16	VPB-223	VB-223	25718	47.6	171.5	117.5	136.5	44.5	18.3	93.7	44.5	27.0	65.1		
1 1/2	VPB-224	VB-224	7340 32648	2 50.8	7 1/8 181.0	4 7/8 123.8	5 7/8 149.2	1 15/16 49.2	13/16 20.6	4 101.6	2 50.8	1 1/4 31.8	2 11/16 68.3	1/2	4.9 2.22
1 5/8	VPB-226	VB-226	7901 35144	2 1/8 54.0	7 3/8 187.3	5 1/4 133.4	6 1/16 154.0	2 50.8	3/4 19.1	4 1/4 108.0	2 50.8	1 1/4 31.8	2 13/16 71.4	1/2	5.6 2.54
1 11/16	VPB-227	VB-227	7901	2 1/8	7 3/8	5 1/4	6 1/16	2	3/4	4 1/4	2	1 1/4	2 15/16	1/2	5.6 2.54
1 3/4	VPB-228	VB-228	35144	54.0	187.3	133.4	154.0	50.8	19.1	108.0	50.8	31.8	74.6		
1 15/16	VPB-231	VB-231	7889	2 1/4	8	5 7/8	6 1/2	2 3/16	3/4	4 9/16	2 3/32	1 11/32	3 3/8	5/8	6.2 2.81
2	VPB-232S	VB-232S	35090	57.2	203.2	149.2	165.1	55.6	19.1	115.9	53.2	34.1	85.7		
2	VPB-232	VB-232	9752 43377	2 1/2 63.5	8 13/16 223.8	6 9/16 166.7	7 5/16 185.7	2 5/16 58.7	7/8 22.2	4 31/32 126.2	2 1/4 57.2	1 3/8 34.9	3 1/2 88.9	5/8	8.0 3.63
2 3/16	VPB-235	VB-235	9752 43377	2 1/2 63.5	8 13/16 223.8	6 9/16 166.7	7 5/16 185.7	2 5/16 58.7	7/8 22.2	4 31/32 126.2	2 1/4 57.2	1 3/8 34.9	3 5/8 92.1	5/8	8.0 3.63
2 1/4	VPB-236	VB-236	11789 52437	2 3/4 69.9	9 1/2 241.3	6 7/8 174.6	7 15/16 201.6	2 3/8 60.3	7/8 22.2	5 9/16 141.3	2 5/8 66.7	1 5/8 41.3	4 1/16 103.2	5/8	10.1 4.58
2 7/16	VPB-239	VB-239	11789 52437	2 3/4 69.9	9 1/2 241.3	6 7/8 174.6	7 15/16 201.6	2 3/8 60.3	7/8 22.2	5 9/16 141.3	2 5/8 66.7	1 5/8 41.3	4 1/8 104.8	5/8	10.1 4.58

Metric dimensions for reference only.
 Not all parts are available from stock. Please contact customer service for availability (800) 626-2120.
 For more information on bearing capabilities outside of our standard offering, please contact Application Engineering (800) 626-2093.